

Metsaga alade pindala muutustest Euroopa kirdeosas

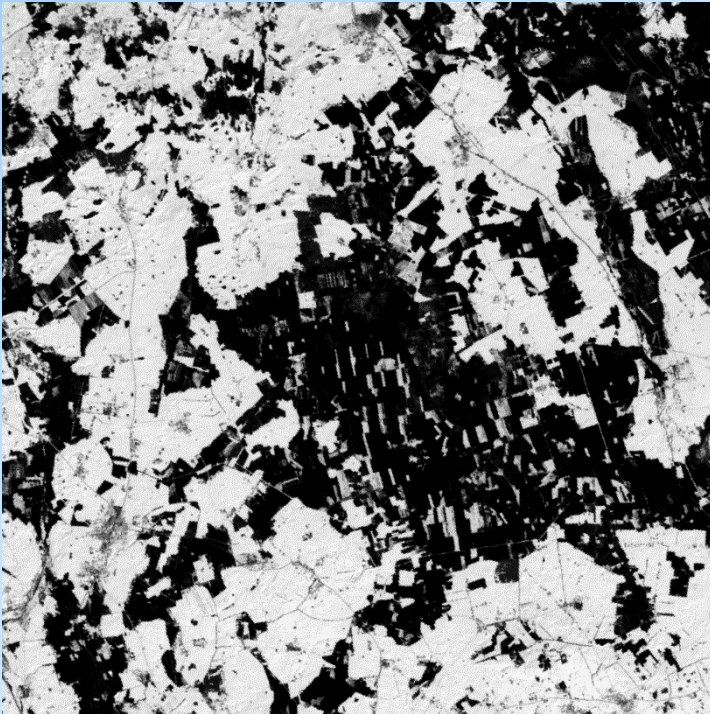
Urmas Peterson (TÜ Tartu observatoorium;
EMÜ metsanduse ja inseneeria instituut) ja
Jaan Liira (TÜ ökoloogia ja maateaduste instituut)
(*Urmas.Peterson@emu.ee*)



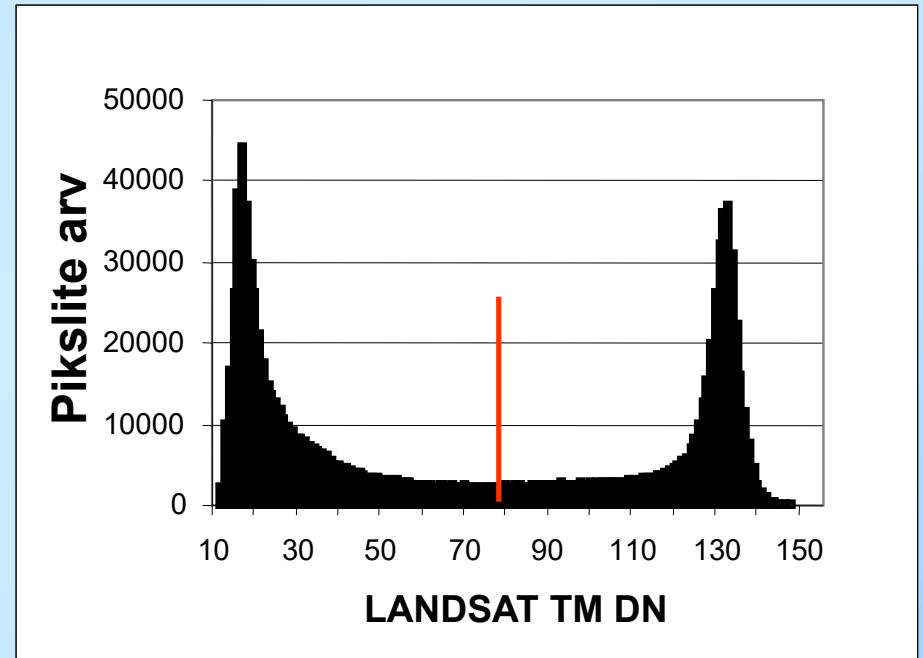
Eesti Maaülikool
Estonian University of Life Sciences



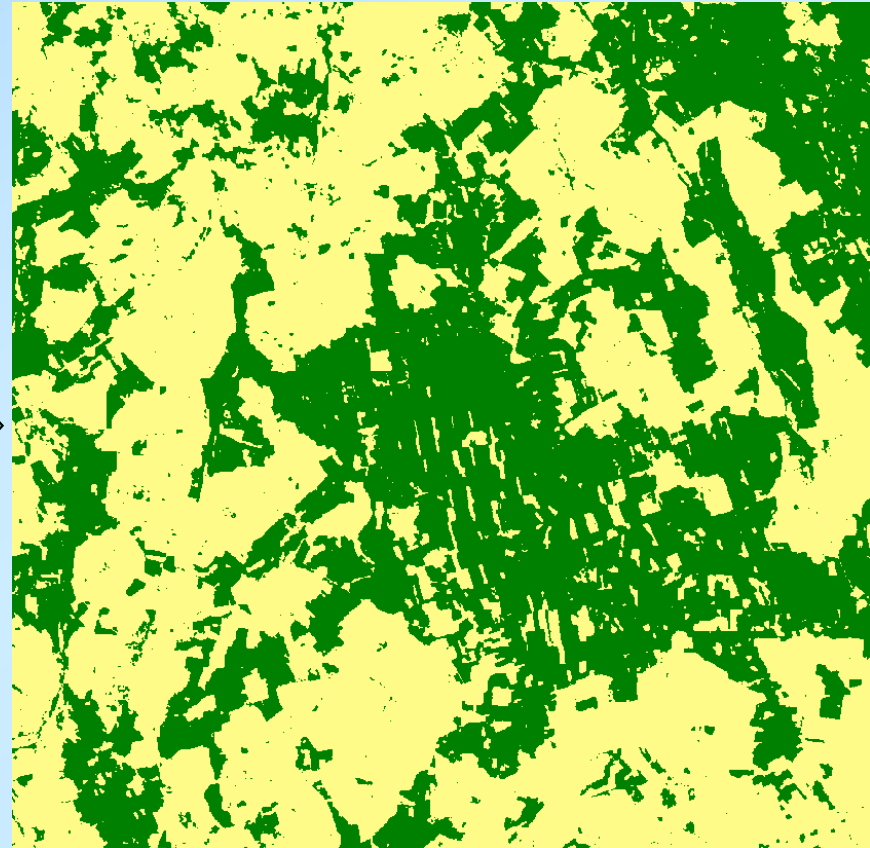
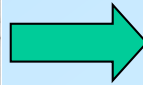
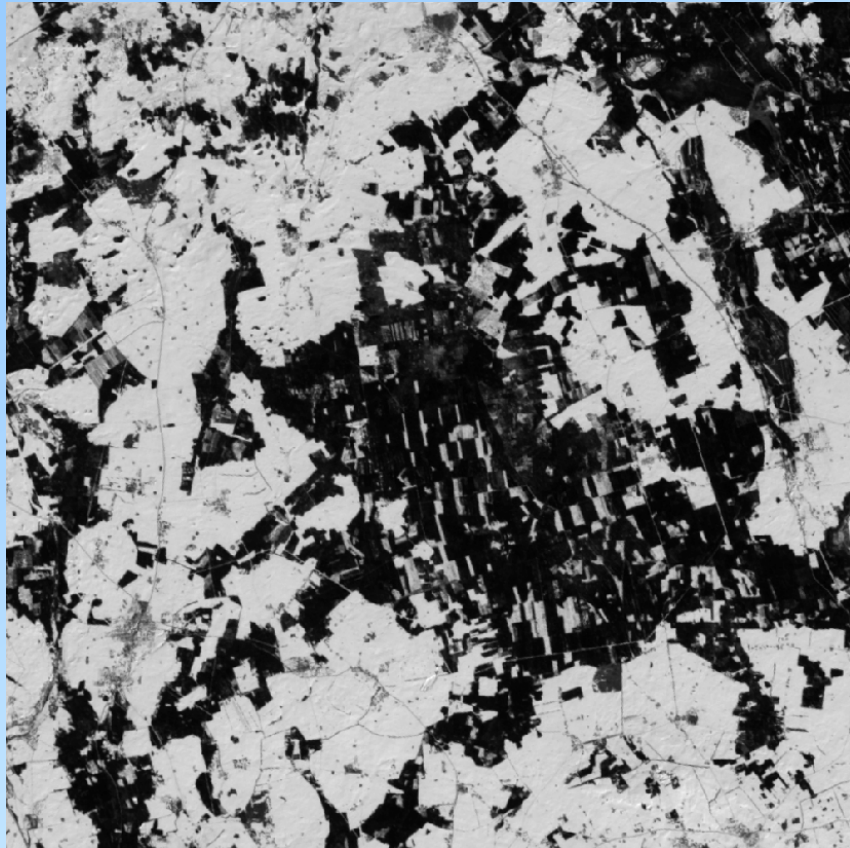
UNIVERSITY OF TARTU



Landsat TM pilt, märts, maapind on kaetud lumega

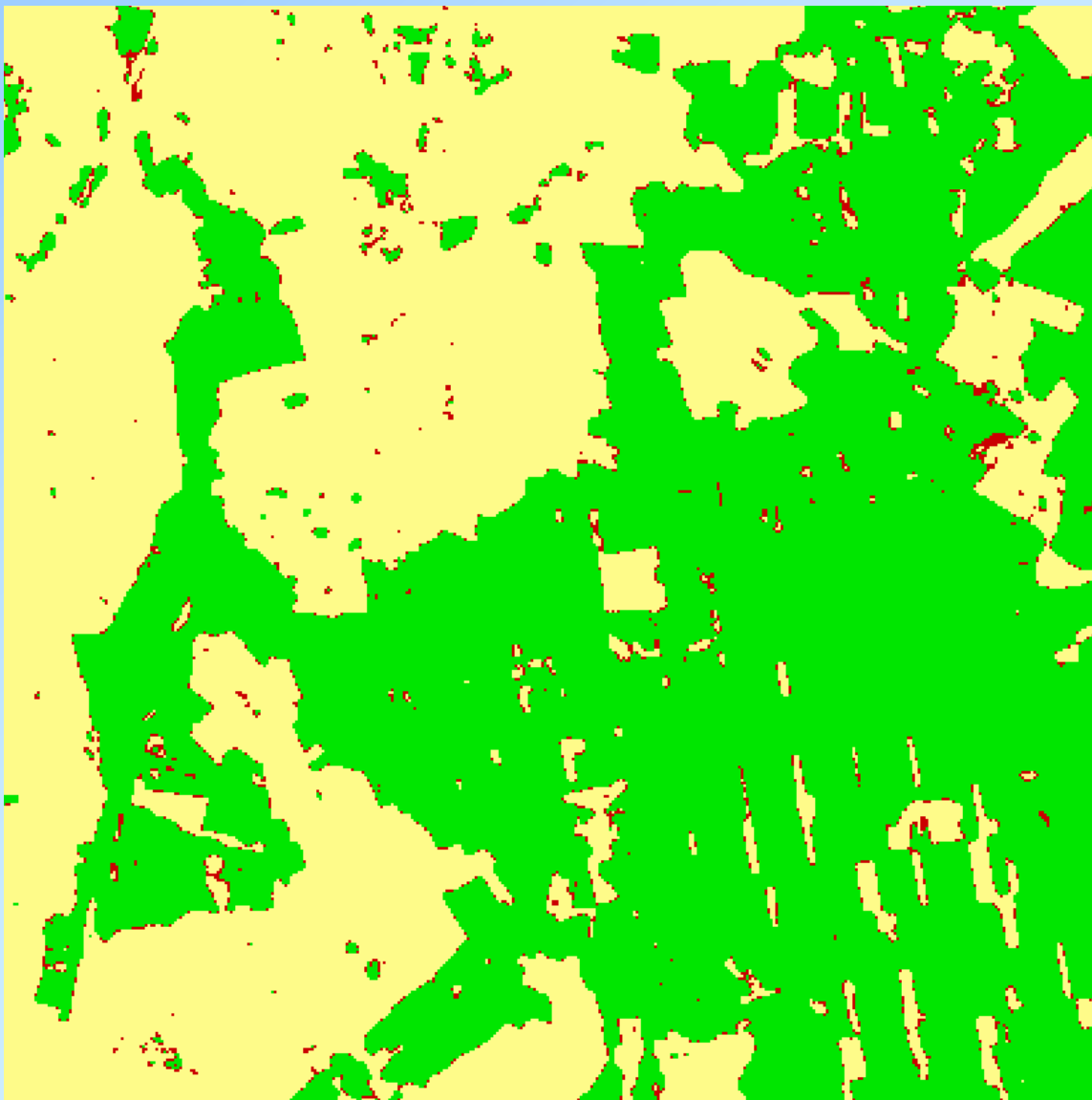


Pildi pikslite väärtuste sagedusjaotus



Talvine satelliidipilt
metsamaastikust on „peaaegu
valmis metsakaart“.

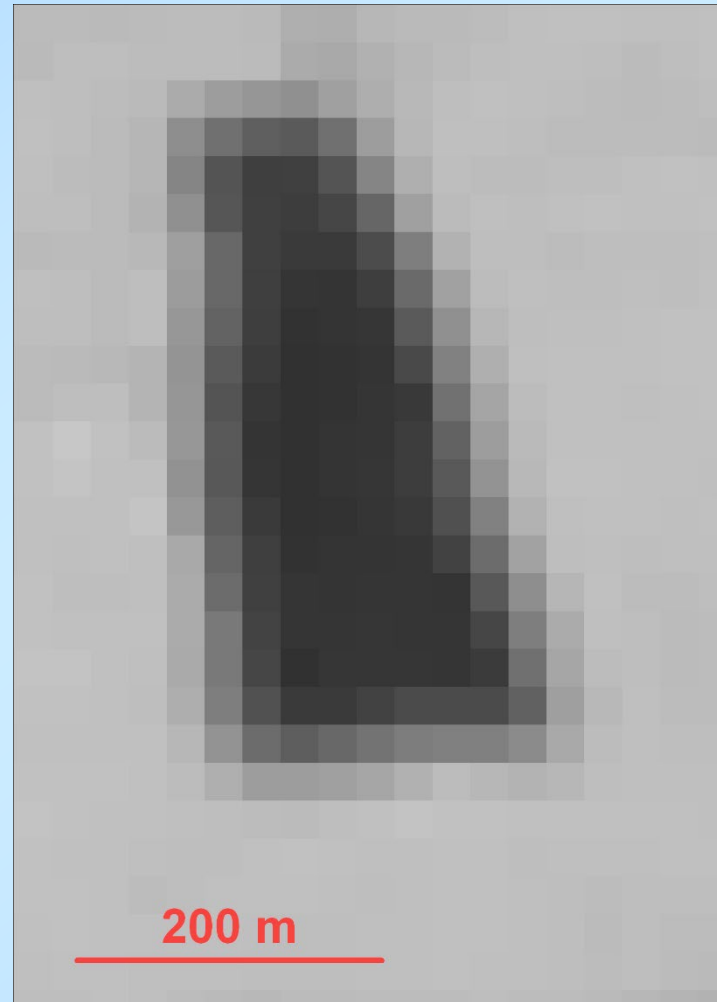
Satelliidipildist toletatud
kahe klassiga kaart:
„mets“ ja „lage“



Lühikese ajavahemiku järel pildistatud piltide võrdlusel avalduvad kaartide erinevused (punased pikslid) valdavalt metsaservades.



Metsalapp ortofotol



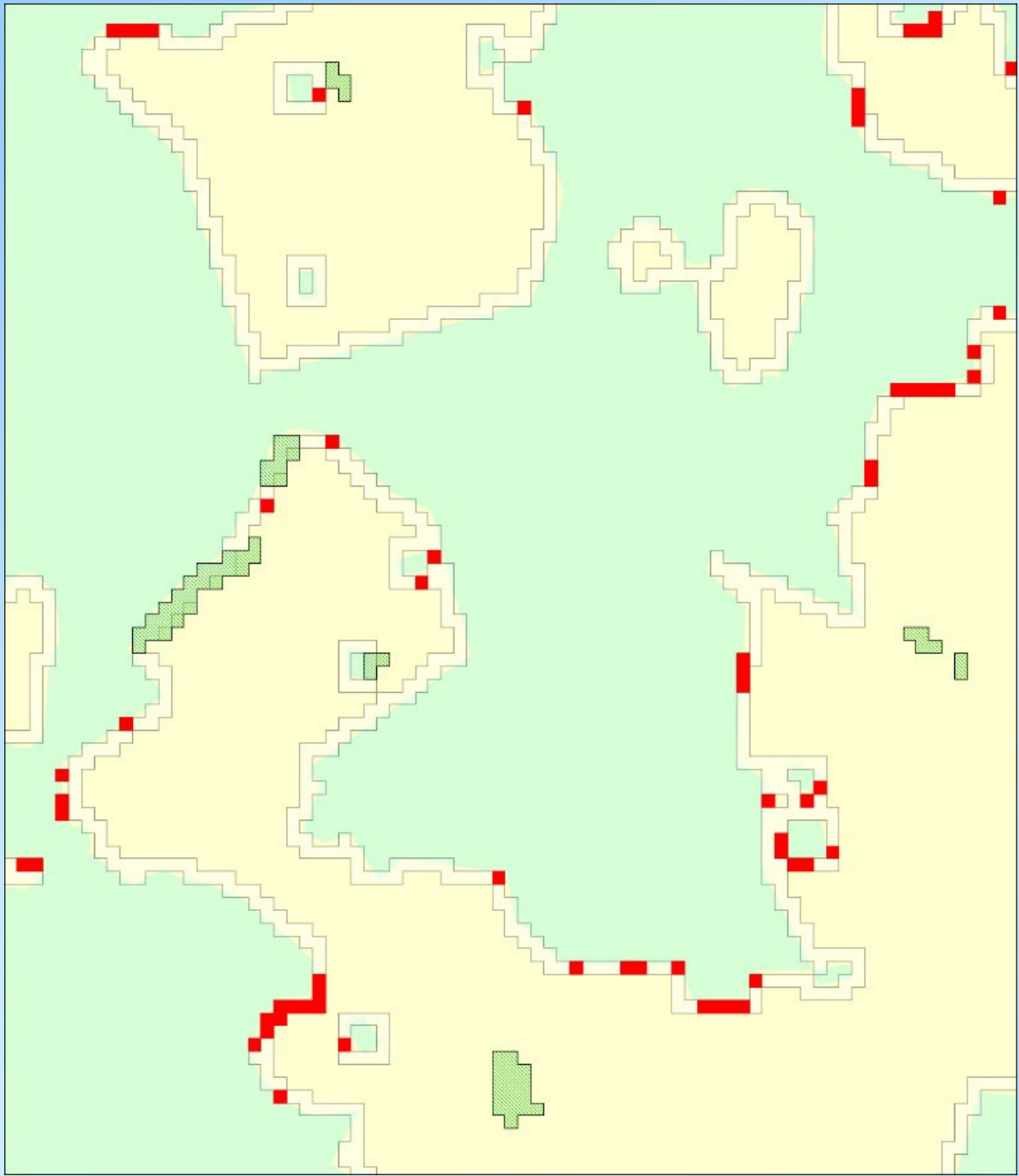
Sama metsalapp Landsat TM
pildil talvel

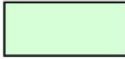





Maakasutuse tavade muutudes on metsalappide servadesse lisandunud nooremate puudega ribad.

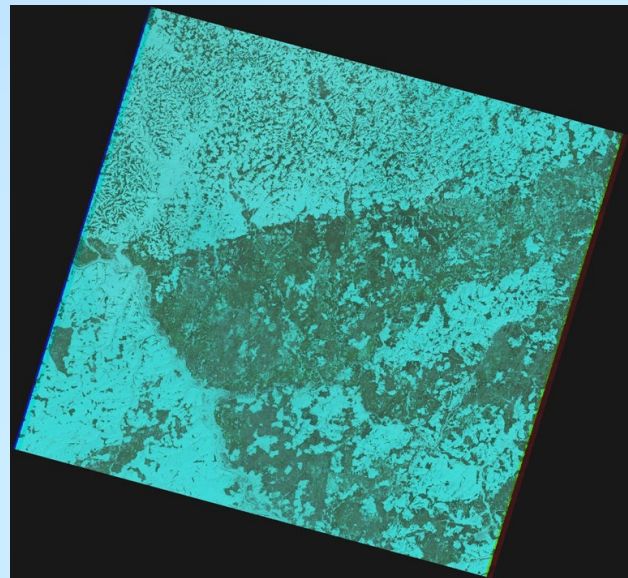


Lisandunud puudereaga metsaserv talvel.

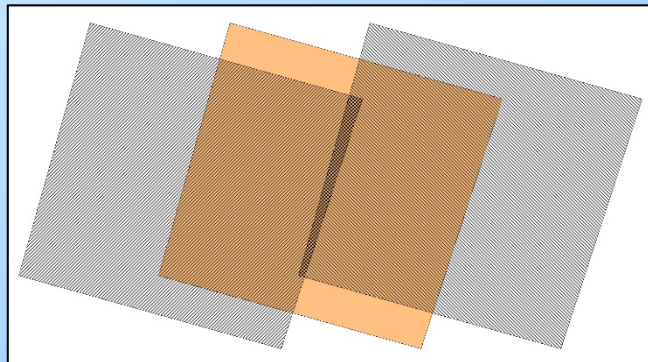


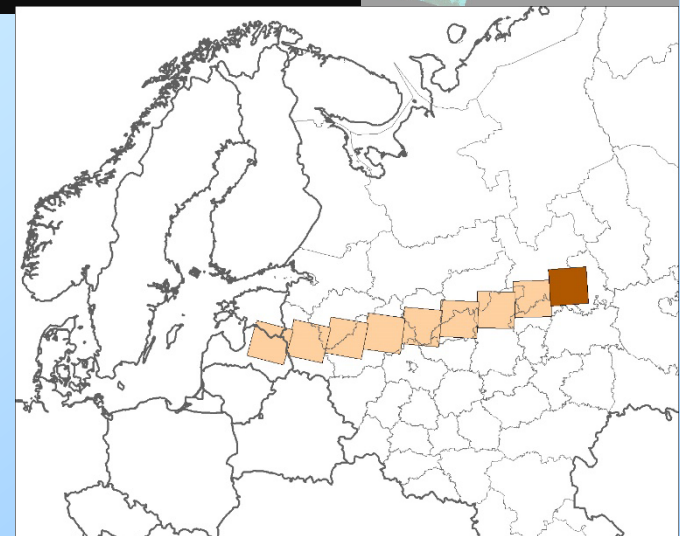
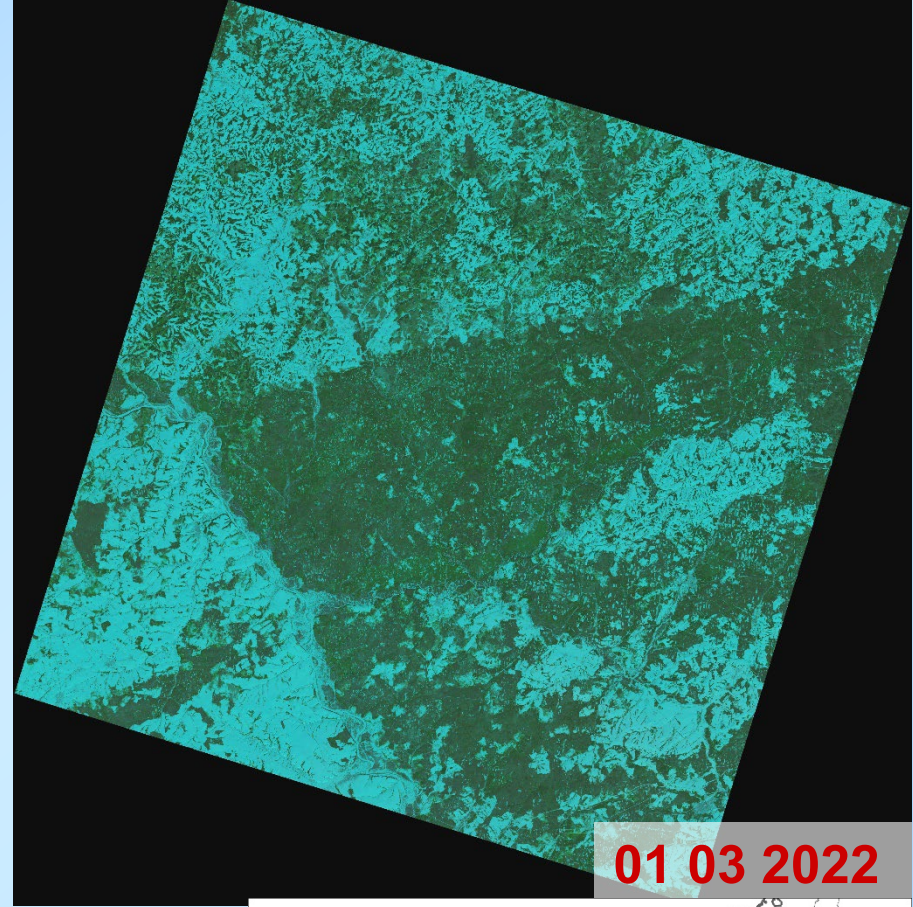
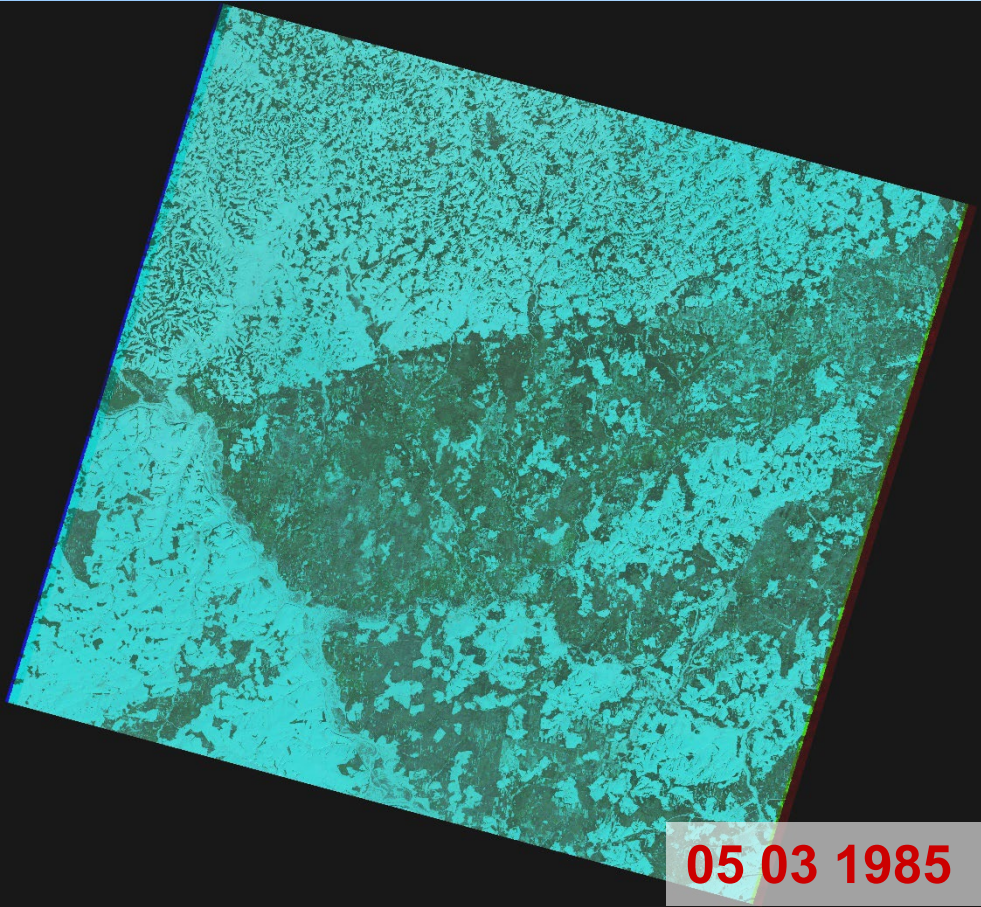
-  Mets
-  Lage
-  Mets lagedal
-  Metsalapid täielikult piirivööndis

Pildid	Klass "mets"
(AAAA/KK/PP)	(km2)
1985 03 05	15994
1985 03 28 ja 02 26 mosaiik	15803
1986 03 24	15565
1987 03 18 ja 03 20 mosaiik	15744
1988 02 26	16299
1988 03 20 ja 03 22 mosaiik	15948
1992 03 24	15615
2003 02 27	17536
2014 03 21	18873
2015 03 08	19390
2016 03 10	19473
2018 03 07 ja 03 09 mosaiik	19897
2018 03 23 ja 03 25 mosaiik	19530
2019 03 03	20212
2019 04 04	19759
2020 03 05	20545
2022 03 11	20503
2024 03 15 ja 03 17 mosaiik	20831

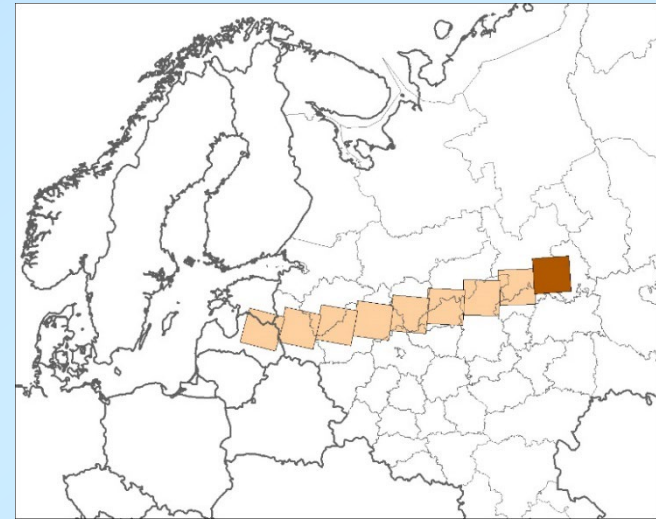
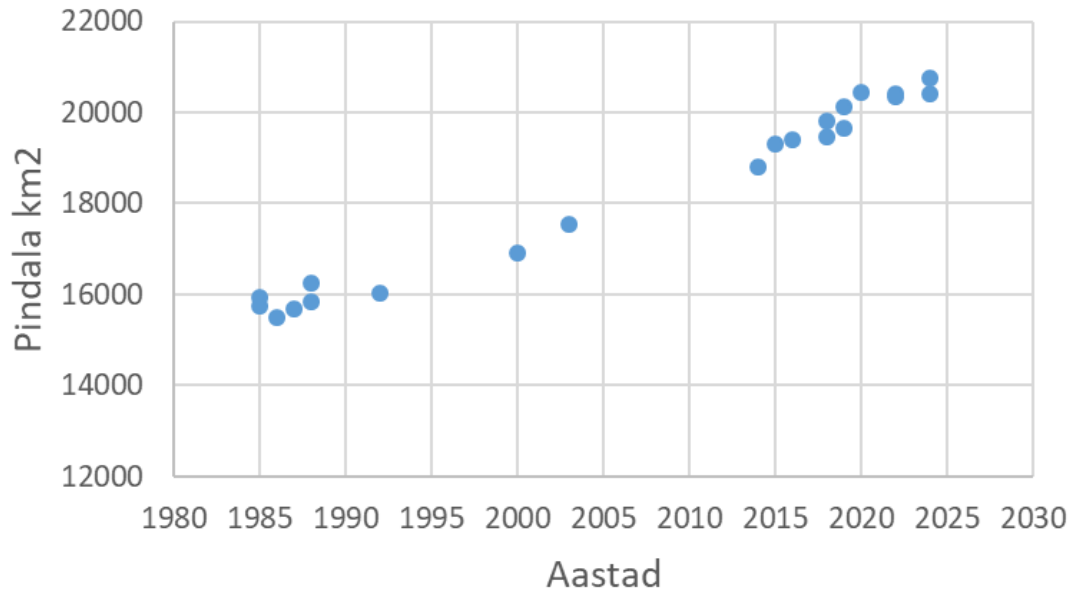


Landsat WRS-2
kaader 170 / 20

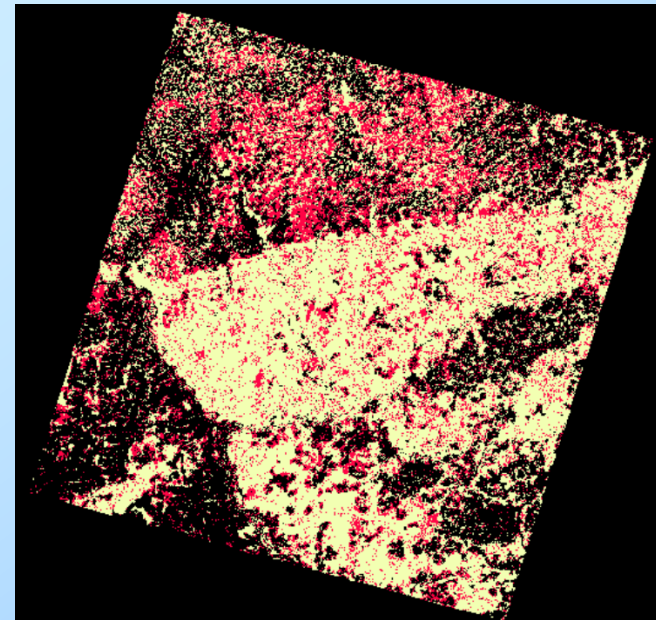
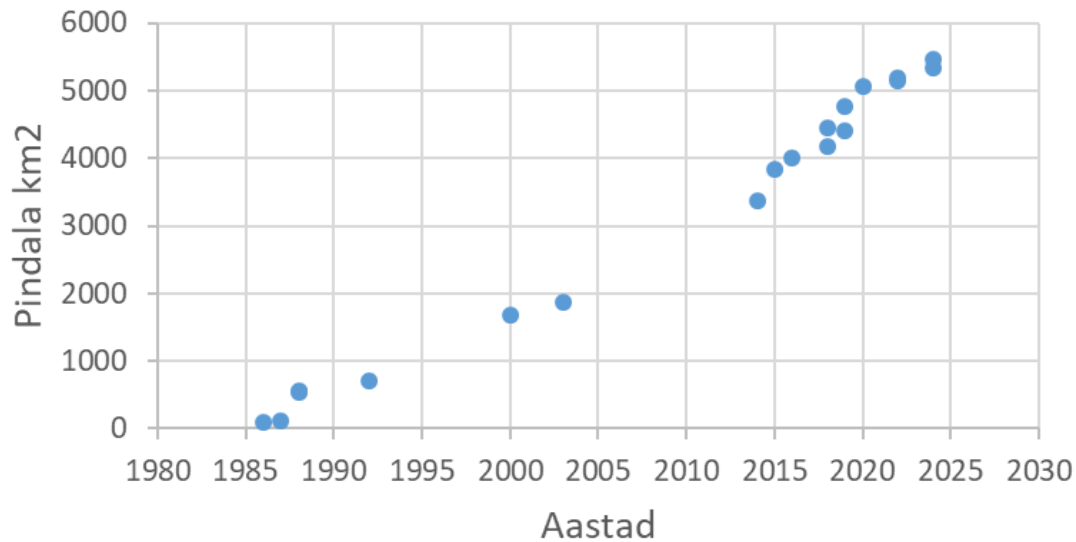




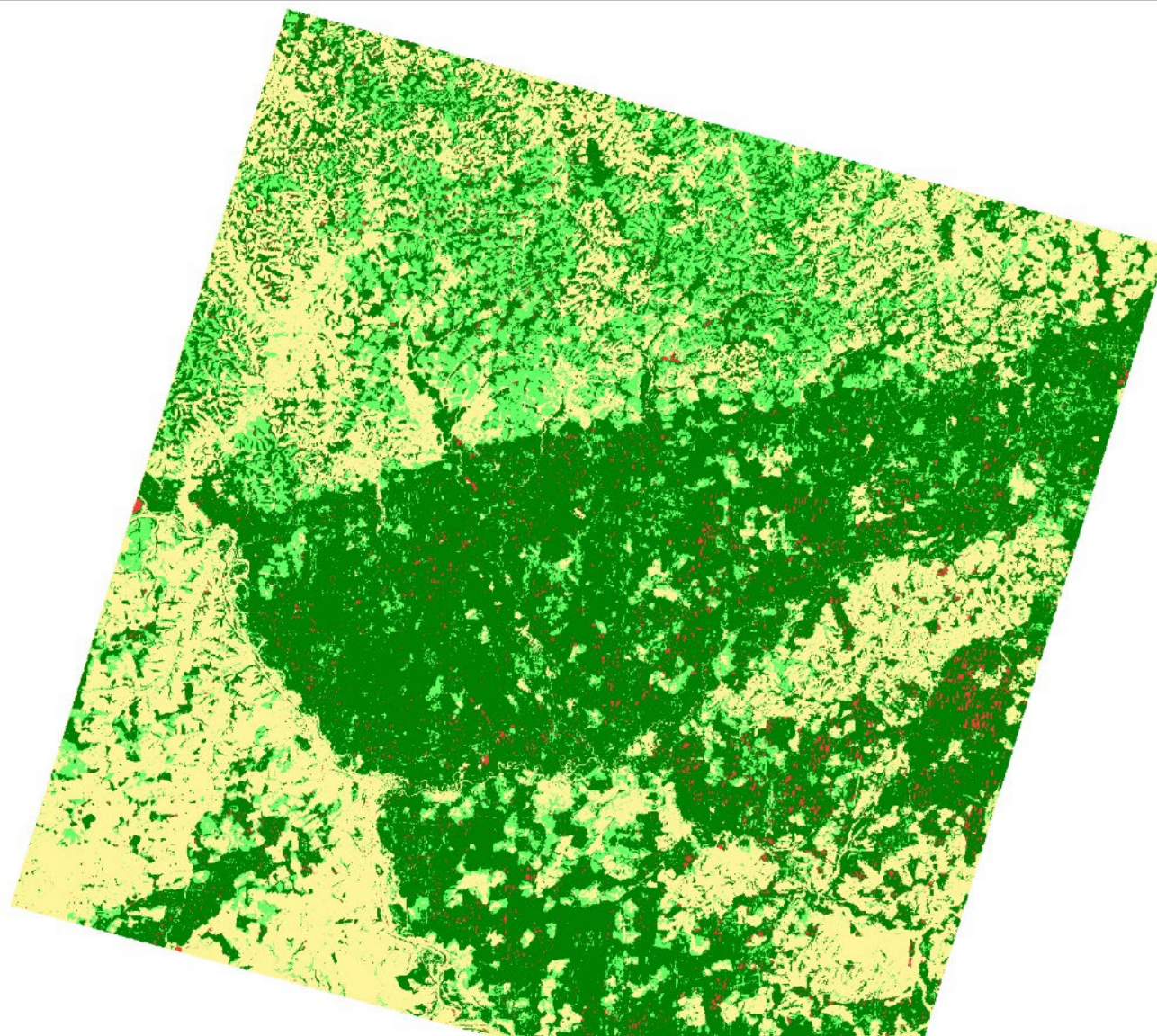
Klassi "mets" pindala kaadris 170 / 20 (km²)



"Mets lagedal" kaadris 170 / 20

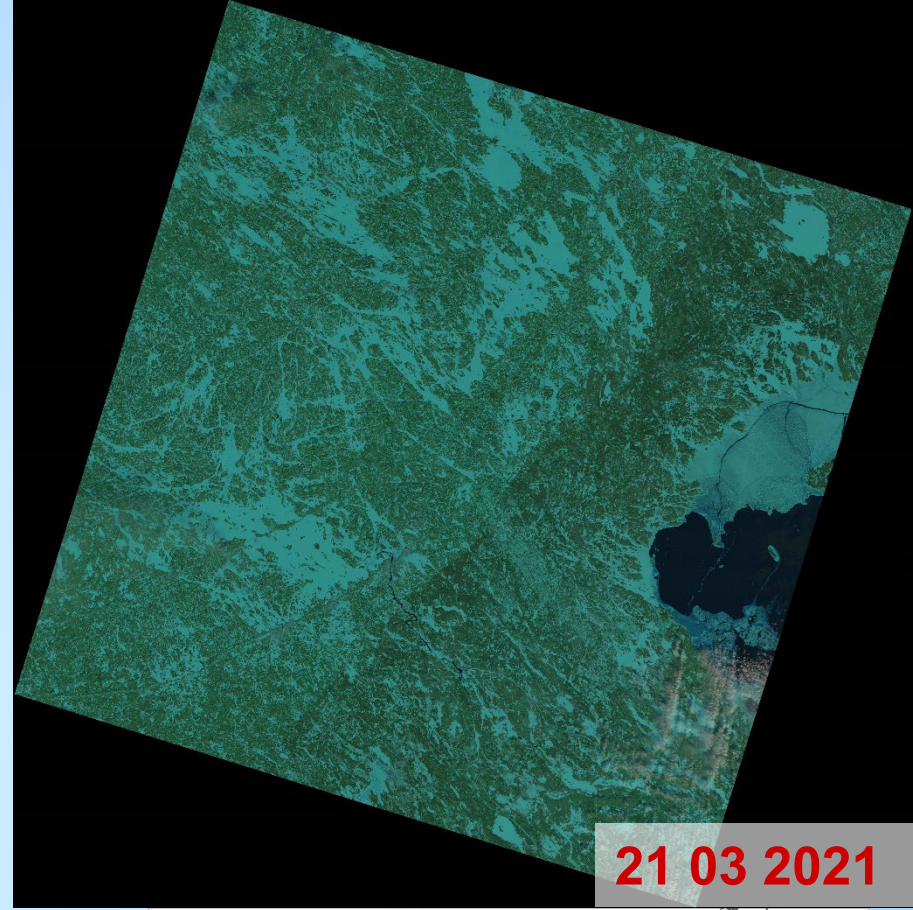
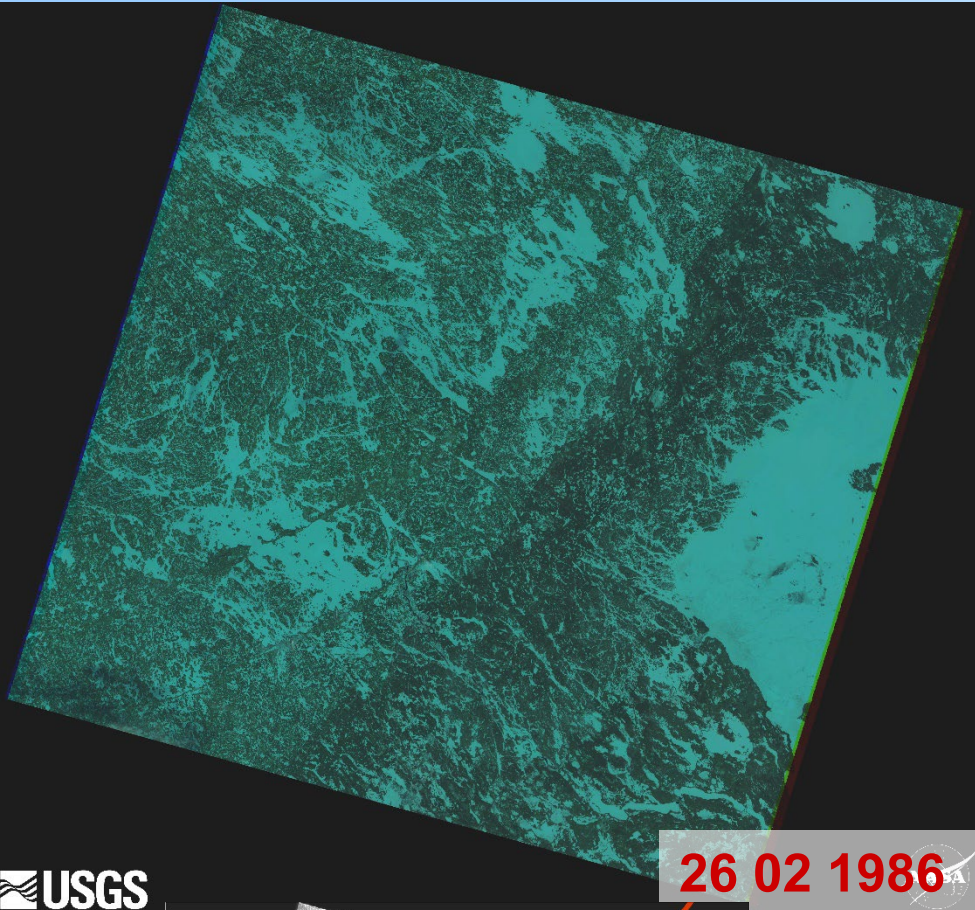


- "Mets" ühel pildil
- "Mets" kahel pildil

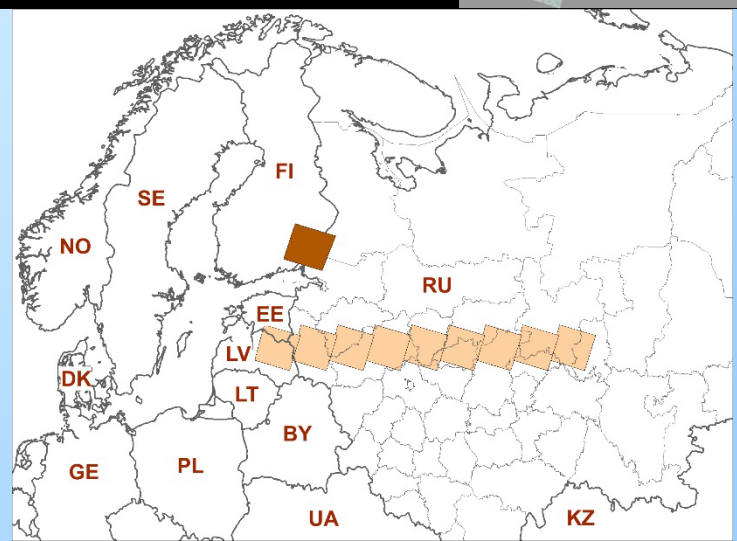


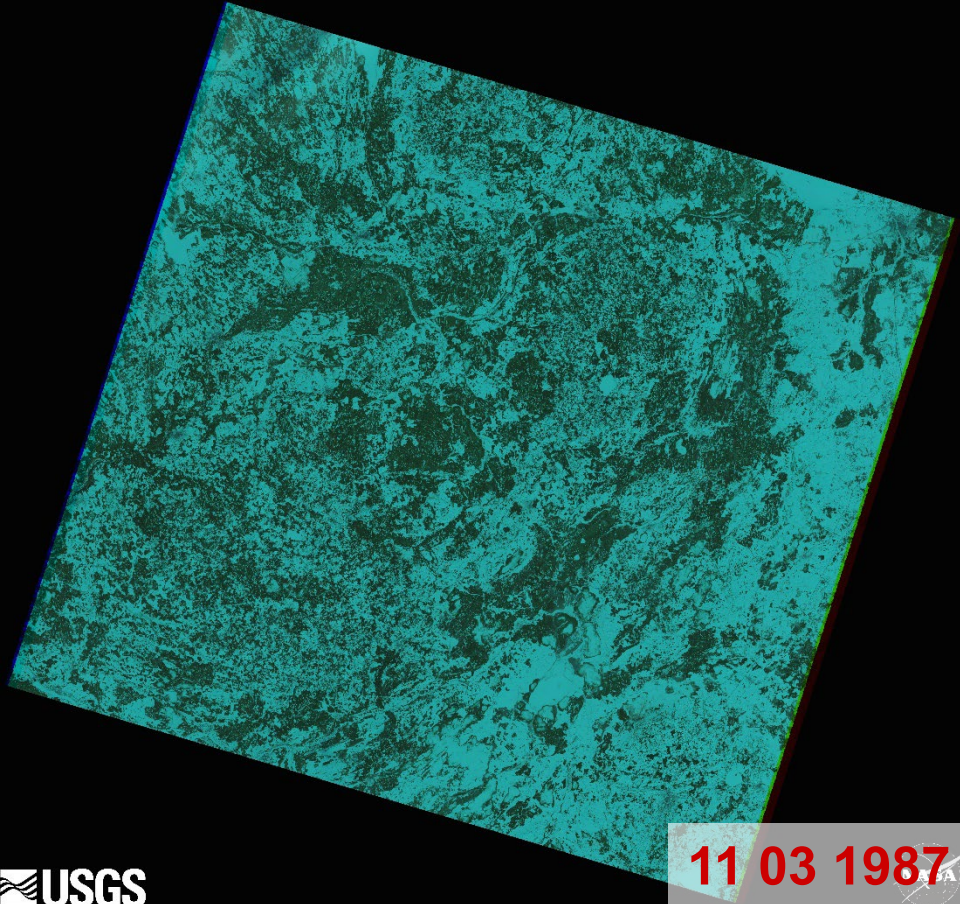
- Open area
- Forested open area
- Temporarily unforested area
- Forested area

1980ndad		2020ndad	
Mets	48.6%	Mets lagedal	34.2%
Lage	51.4%	Ajutiselt metsata ala metsas	4.4%

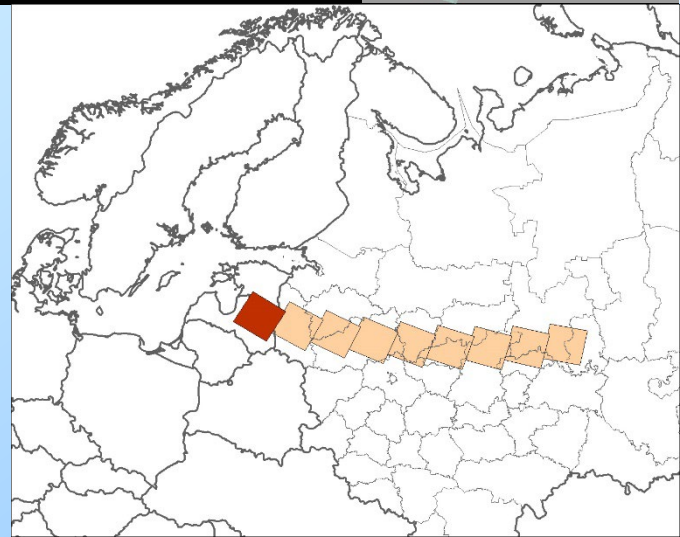
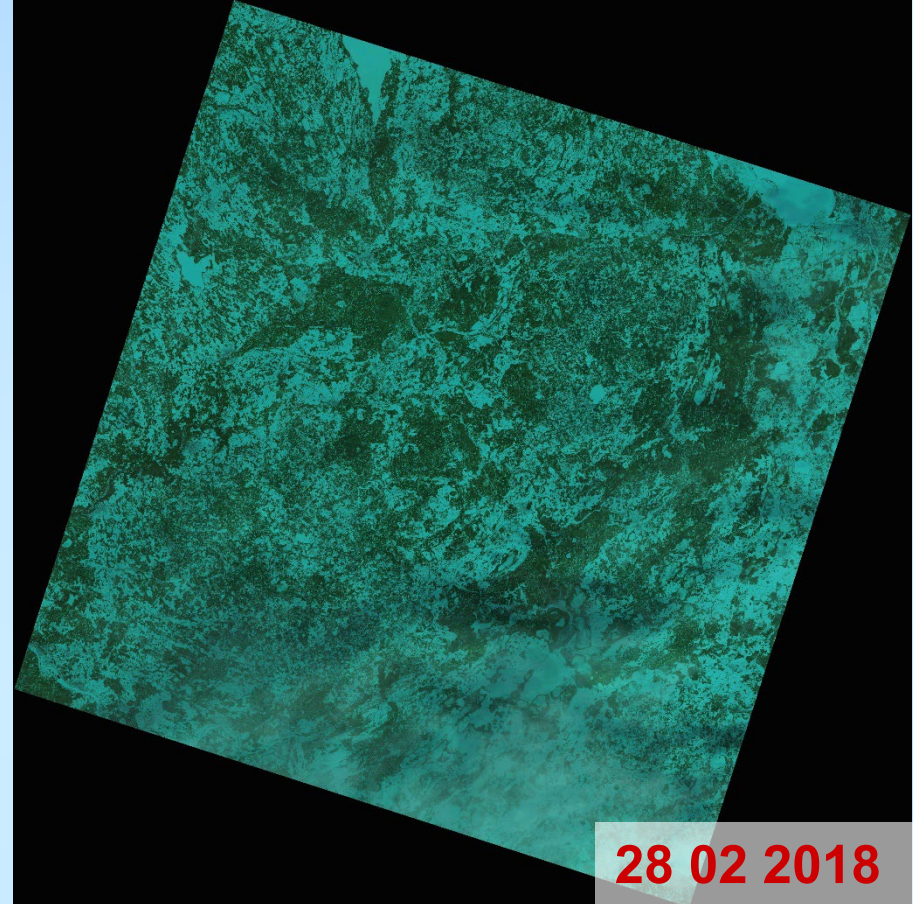


USGS

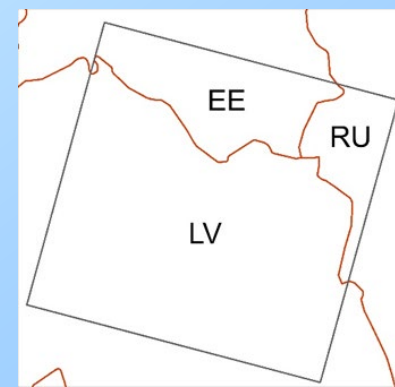
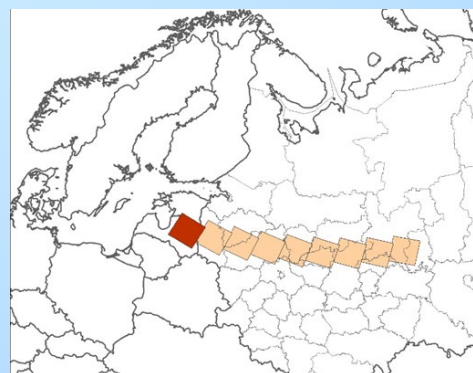
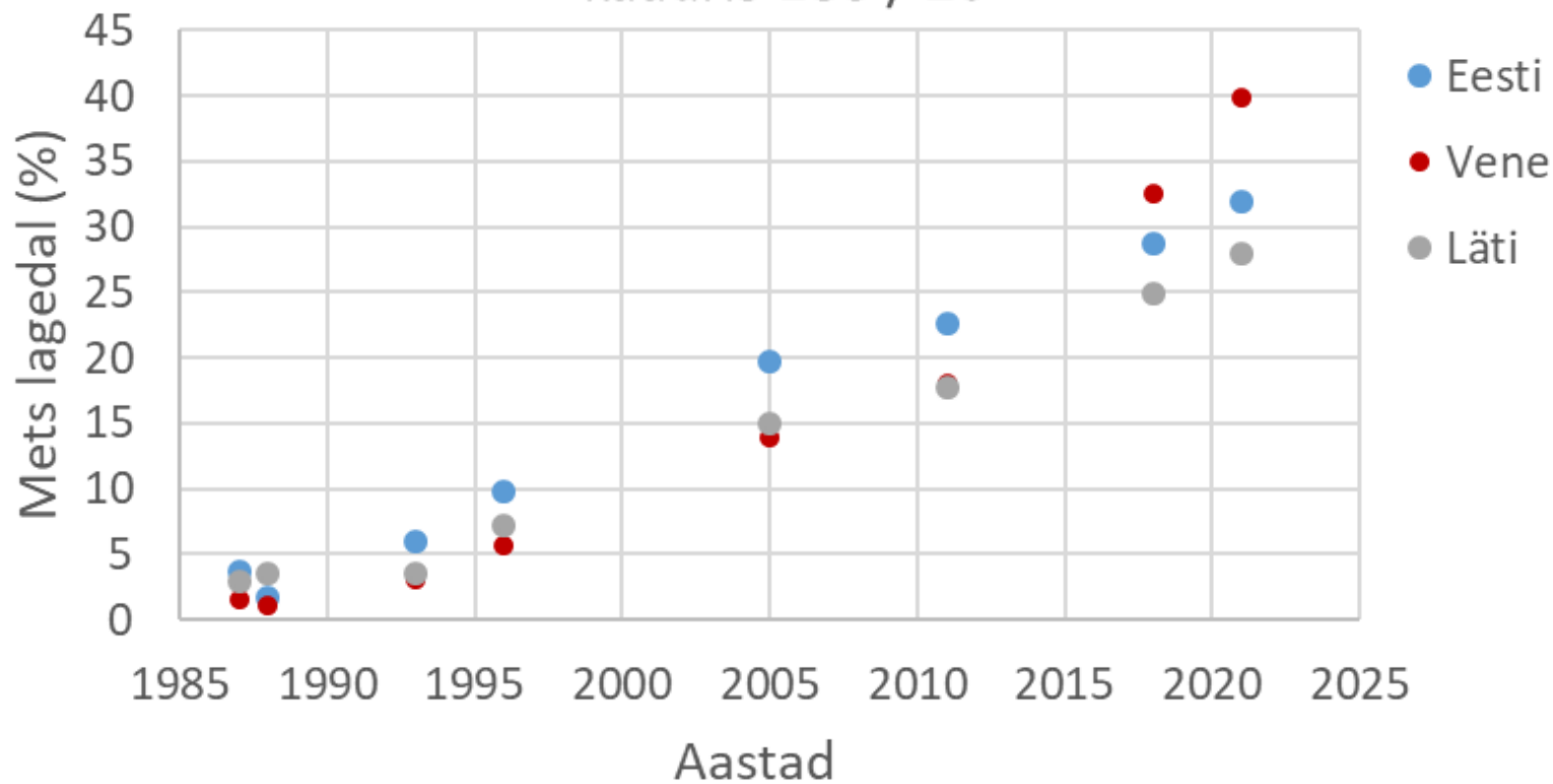




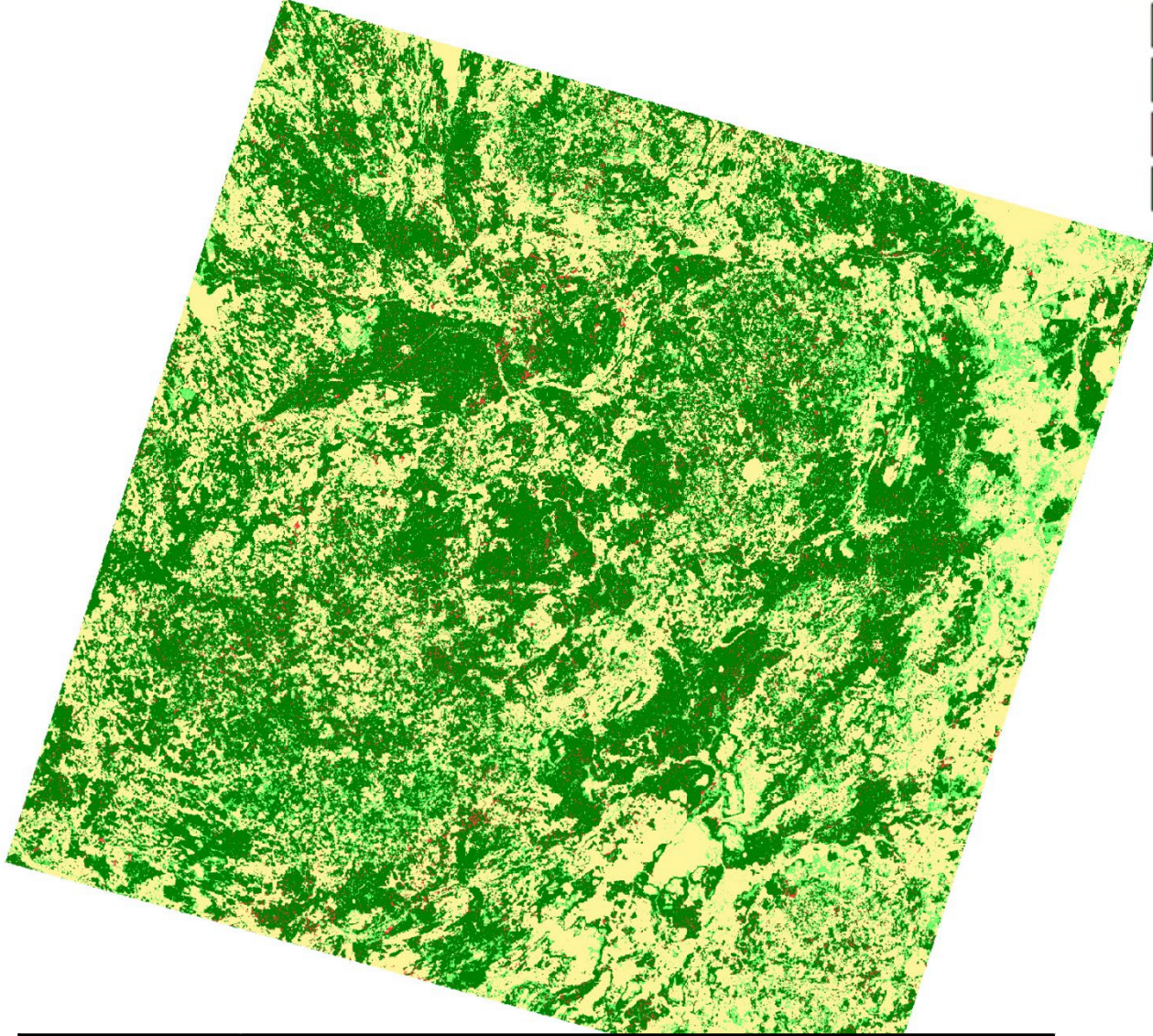
USGS



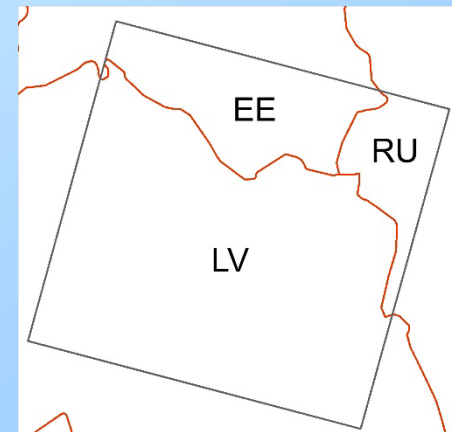
Lageda ala suhteline metsastumine (%) kaadris 186 / 20



- Open area
- Forested open area
- Temporally unforested area
- Forested area



1980ndad		2020ndad	
Mets	47.9%	Mets lagedal	30.3%
Lage	52.1%	Ajutiselt metsata ala metsas	7.8%



A satellite-style map of Europe, showing forest cover changes. The map uses a color scale where green indicates forested areas and brown/white indicates cleared or agricultural land. A semi-transparent dark grey box is overlaid on the map, containing text in yellow. The text describes the increase in forest area in Europe since the 1980s, particularly in Finland and the Baltic states.

Metsaga alade pindala Euroopa kirdeosas suureneb 1980ndatel aastatel olnud lagedate alade metsastumisena.

Metsastumine on laialdane olnud Venemaal ja on väiksem Läänemere-äärsetes Balti riikides.